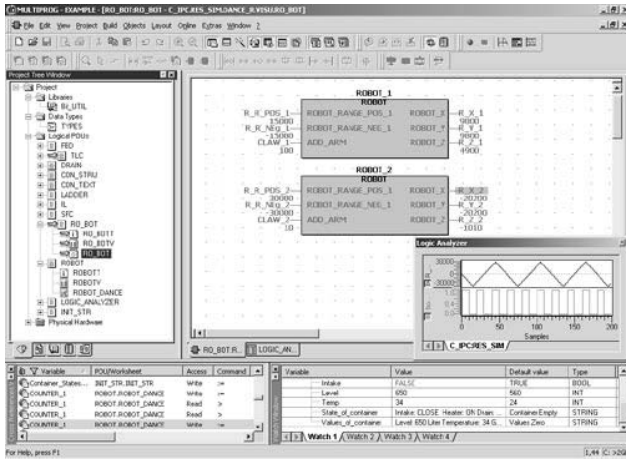


KW MULTIPROG®

IEC-61131-3 SoftLogic Control Software



Features

- IEC-61131-3 Programming languages
- Intuitive programming with a clear project structure
- Cross-compiling: FBD, LD and IL can be cross-compiled to each other
- Multi user functionality shortens programming time
- Management of distributed controls
- Network variables: Easy and powerful configuration of distributed communication
- Powerful debugging tools: Online changes, PLC simulation, overwriting & forcing, breakpoints, watch windows & recipes, logic analyzer, and cross reference
- Online program download

Introduction

Advantech's Programmable Automation Controller (PAC) solution leverages KW Software's Multiprog and ProConOS as the single developing tool and SoftLogic control kernel. It requires only a one-time design, and then can easily leverage the control know-how into different control platforms to meet versatile automation projects needs. KW SoftLogic also creates single tagging database and HMI Software, such as Advantech Studio, shares the same tagging database by OPC server under Windows CE operating system. All the features can help users to save the visible and invisible cost.

MULTIPROG® supports all IEC 61131-3 programming languages. Depending on the task to be handled, your experience and company standards, you may choose one of the five standardized programming languages. The use of MULTIPROG offers you many advantages. Our long-term experience in the automation industry guarantees you a sophisticated software product.

Specifications

Hardware Requirements

Device	Minimum	Recommended
IBM compatible PC with Pentium Processor	200 MHz	350 MHz
System RAM	64 MB	128 MB
Hard Disk	60 MB free memory space	
CD-ROM drive		
VGA Monitor Color Settings	256 colors	True color
Resolution	800 x 600	1024 x 768
RS-232 interface	Optional	
Mouse	Recommended	

Advantech Hardware Supported

- APAX-5000 Series
- ADAM-5550KW Series
- ADAM-5510KW Series

Software Requirements

- Microsoft® Windows NT 4.0 SP5 or Windows 2000/XP
- Microsoft Internet Explorer 5.02 or above

IEC-61131-3 Programming Languages

- Instruction List (IL)
- Structured Text (ST)
- Function Block Diagram (FBD)
- Ladder Diagram (LD)
- Sequential Function Chart (SFC)
- All programming languages can be mixed within one project

Ordering Information

- MPROG-ADV46E** KW Multiprog Advanced v4.6 (64 kbyte I/O)
- MPROG-BAS46E** KW Multiprog Basic v4.6 (128 bytes I/O)